

# black+blum

L O N D O N

## 2023 CATALOGUE





## ABOUT US

Founded over 20 years ago by Dan Black and Martin Blum, Black+Blum is a UK-based eco-design company, specialising in high-quality and durable food containers, drinkware and accessories. Innovative and sustainable design principles guide our brand, the entire range is thoughtfully developed and built to last.

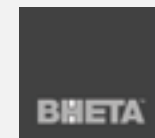
Winning over 25 design awards globally, our products are sold in over 60 countries with warehouse centres in the UK, EU and USA.

## DURABLE DESIGN

Every product has been uniquely designed in our studio in London. Each detail carefully considered for repeated lifelong use, and every material sourced to the highest standard for durability.

From concept to final product, we conduct rigorous research and development to ensure everything we create has a place in the world, meets a real need, and will last a lifetime.

## PROUD MEMBERS OF:



“We create products that people love to use, and are proud to own.”

Dan Black



## OUR PLEDGE TO THE PLANET

Sustainability is at the core of our design philosophy. We work with high-quality materials, naturally sourced where possible, creating products to be reused for life.

We are proud members of 1% for the Planet which commits us to donate at least 1% of our sales revenue to non-profit environmental charities every year. Our chosen charity partners are City Harvest and Trees for Cities.

## VOLUNTEERING

Our team also commits to regularly volunteering with our chosen charities.

Planting trees, sorting surplus food, or helping deliver it to shelters, we love to get stuck in and put our brand ethos into practice. It's also a great chance to step away from our desks for a day and get outside.



1% for the Planet represents a global network of businesses, individuals and Environmental Partners tackling our planet's most pressing environmental issues.



They are the only UK charity working at a national and international scale to improve lives by planting trees in cities.



City Harvest rescues surplus food and redistributes it to food banks, schools and community groups.





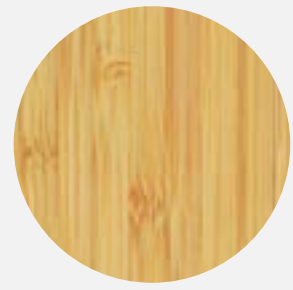
# OUR MATERIALS

Our materials are chosen with great care - we consider how they are required to function, their durability, and their impact on the environment. We choose natural materials where possible, but our biggest aim is to create products which are made to last.



## STAINLESS STEEL

We only use industrial strength 304-18/8 steel in our products for its long-lasting reliability and excellent resistance to corrosion and rust. It is also completely recyclable.



## BAMBOO

Naturally anti-fungal and antibacterial, bamboo is great to use as a lid/chopping board. It's fast growing and quickly regenerates, minimising environmental impact.



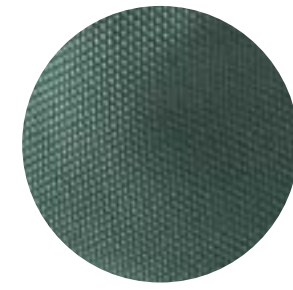
## WOOD COMPOSITE

A mix of recycled and FSC/PEFC approved wood with PP or TPR. It has a highly durable finish that will age well.



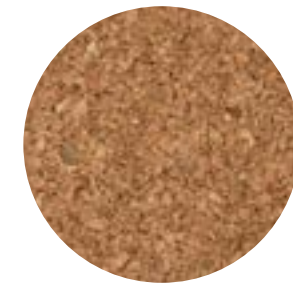
## CHARCOAL

We use active charcoal as a natural, plastic-free water filter. We only farm from local renewable forests, preserving the roots to promote re-growth and protect soil biodiversity.



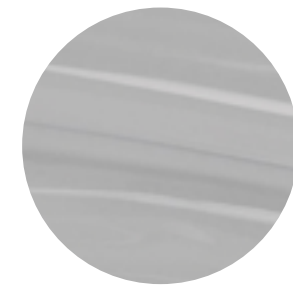
## RECYCLED PET

Tough, hard-wearing, water-repellent and easy to wipe clean, this material is used in our soft goods is made from recycled plastic bottles and other single-use containers.



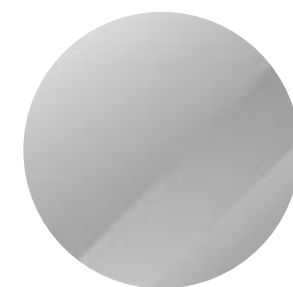
## CORK

Renewable, biodegradable and 100% natural, cork has been used for centuries across many industries. It's also water-repellent, so ideal as the lid material in some of our bottles and thermoses.



## PLASTIC

Sometimes certain plastics are the best material for the job. BPA/BFS-free, we only use high-quality plastics, sparingly and responsibly. All our plastics are 100% recyclable.



## GLASS

The glass used in some of our products is Borosilicate - it is lightweight, strong and chemical resistant, taste-neutral, lead and BPA-free. It will age extremely well and last a lifetime.





# OUR PACKAGING

All our product packaging is made from unbleached and uncoated kraft cardboard, making it 100% recyclable (it can even be added to home compost). Our packaging ensures all our designs are fully protected in transit and reach the end customer in perfect condition, yet are also beautifully presented with a natural and earthy look. This way, every product can either be a self-purchase or a gift.

## CLOSED GIFT BOXES

Our higher value products tend to be packaged in full boxes as this makes them easier to gift and transport.

## GIFT BOXES WITH WINDOWS

Based on customer research, we understand that sometimes our audience like to have a peak at what's inside, whether it's the colour or materials used.

## SWING TAGS + SLEEVES

Our more minimal and basic ranges have swing tags or sleeves to reflect the retail environment or user requirements. We also do not box products unnecessarily as this is wasteful, for example our soft goods range.





# OUR PRODUCTS | FOOD CONTAINERS



## STEEL LUNCH BOXES

- 10 Stainless Steel Lunch Boxes
- 12 Bento Box
- 14 Sandwich Boxes



## THERMOSES

- 16 **NEW** - Thermo Pot
- 18 Food Flask



## ORIGINALS

- 20 Lunch Box Original
- 22 Lunch Pot Original



## GLASS

- 24 Glass Lunch Boxes



## MULTI-FUNCTION

- 28 **NEW** - Multi-Function Boxes
- 30 **NEW** - Multi-Function Bowls



# DRINKWARE



## STEEL WATER BOTTLES

- 33 **NEW** - Explorer Bottles
- 35 Insulated Water Bottles
- 37 Steel Bottle



## GLASS WATER BOTTLES

- 39 Glass Water Bottle



## TUMBLER

- 41 **NEW** - Insulated Travel Tumbler



## TRAVEL CUPS

- 44 Insulated Travel Cup
- 46 Glass Travel Cup



# CHARCOAL FILTERS



## CHARCOAL FILTERS

- 49 Active Charcoal Filters
- 51 Bulk Charcoal Pieces
- 52 Charcoal Water Filter & Coil



## CHARCOAL VESSELS

- 54 **NEW** - Eau Good Glass
- 56 Carafes

# ACCESSORIES



## LUNCH BAG + CUTLERY

- 59 Lunch Bag
- 61 Cutlery Set & Case + CDU



## RECIPE BOOK

- 63 Recipe Book



# FOOD CONTAINERS

Our award-winning food containers make the perfect companion for the park, the office and the trail. Choose from high-quality stainless steel, lightweight glass or durable plastic, they come with and without cutlery and removable dividers to separate your snacks. We also have a range of vacuum insulated thermoses to keep your food or drinks hot or cold for hours. This entire collection is thoughtfully designed, reliable, and built to last.





# STAINLESS STEEL LUNCH BOXES

The ultimate product for outdoor adventurers and busy commuters, this design is incredibly sturdy and a favourite among those living plastic-free and zero-waste. Taking inspiration from the timeless design of army mess tins, it's been engineered to include a vacuum sealed valve and lid, making it airtight and 100% leak proof.



## SEALED + SECURE

The vacuum sealed silicone lid valve keeps it securely closed, 100% leak proof and airtight



## TOUGH + DURABLE

Built to withstand drops and dents, this steel lunch box won't buckle under pressure



## OVEN + FREEZER SAFE

So you can warm up your food or freeze leftovers



## FORK INCLUDED

Seamlessly integrated within the silicone band, the stainless steel fork makes it quick and easy to stop for lunch



## RECYCLABLE MATERIALS

BPA-free, 304/18-8 stainless steel, silicone

# STAINLESS STEEL LUNCH BOX LARGE

WATCH VIDEO



Olive  
BAM-SS-L010



Ocean  
BAM-SS-L005



Orange  
BAM-SS-L003



Adjustable + removable  
food divider included



SIZE	VOLUME + WEIGHT
L20 x W14 x H6 cm L7.8 x W5.5 x H2.3 in	1 L   34 fl oz 460 g   16.2 oz

# STAINLESS STEEL LUNCH BOX

WATCH VIDEO



Olive  
BAM-SS-S010



Ocean  
BAM-SS-S005



Orange  
BAM-SS-S003



Vacuum sealed  
valve



SIZE	VOLUME + WEIGHT
L17.5 x W13 x H5 cm L7 x W5.1 x H2 in	600ml   20 fl oz 330 g   11.6 oz





1L  
34oz



600ml  
20oz





# STAINLESS STEEL BENTO BOX

Designed in collaboration with bento expert Sara Kiyo Popowa, it is one of the first fully leak proof steel bentos on the market. It includes two identical boxes which stack neatly atop each other, and a stainless steel fork. Breakfast and lunch, lunch and snacks, it's big enough to keep you going for the whole day.

WATCH VIDEO 



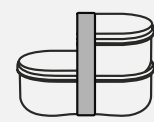
## SEALED + SECURE

The vacuum sealed silicone lid valve keeps it securely closed, 100% leak proof and airtight



## FORK INCLUDED

Hygienically stowed underneath the lid, the stainless steel fork makes lunch easy when you're on-the-go



## TAKE ONE BOX OR TWO

The beauty of this design is that it can be used as a set or individually, the strap fits around both



## BAMBOO LID

Naturally antibacterial and anti-fungal, it doubles as a chopping board or extra serving plate



## RECYCLABLE MATERIALS

BPA-free, 304/18-8 stainless steel, polypropylene with wood fibre, silicone, nylon, natural bamboo

# MADE IN A COLLABORATION WITH



*Sara Kiyo Popowa*

Sara Kiyo Popowa of Shiso Delicious



BAM-BT-L016

SIZE	VOLUME + WEIGHT
L18.5 x W9.7 x H12.5cm L7.3 x W3.8 x H4.9 in	2 x 500 ml   2 x 17fl oz 510 g   18 oz







'The way we eat has the power to change the future.' Designing a bento box with Black+Blum has been a dream project. I hope you will enjoy using it. Sara x

[www.shisodelicious.com](http://www.shisodelicious.com)  
@shisodelicious



# SANDWICH BOXES

Made from high-quality stainless steel, the Sandwich Box range is perfect for dry goods like sandwiches, baked treats and snacks. The naturally antibacterial bamboo lid doubles as a chopping board or serving platter, perfect for picnics. They are tough, versatile and completely airtight.

## SAFE + SECURE



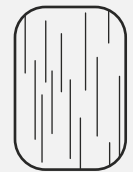
The silicone seal combined with the strap holds the bamboo lid securely in place, plus is airtight, keeping food fresher for longer

## TOUGH + DURABLE



Built to withstand drops and dents, this steel lunch box won't buckle under pressure

## BAMBOO LID



Naturally antibacterial and anti-fungal, it doubles as a chopping board or extra serving plate

## RECYCLABLE MATERIALS



BPA-free, 304/18-8 stainless steel, natural bamboo, silicone

# SANDWICH BOX LARGE

WATCH VIDEO



Olive  
BAM-SB-L010



Ocean  
BAM-SB-L005



Orange  
BAM-SB-L003



Removable silicone compartment included



SIZE	VOLUME + WEIGHT
L19 x W13.5 x H7.5 cm L7.5 x W5.3 x H3 in	1.25 L   42 fl oz 430 g   15.1 oz

# SANDWICH BOX

WATCH VIDEO



Olive  
BAM-SB010



Ocean  
BAM-SB005



Orange  
BAM-SB003



Natural bamboo lid to prep + serve



SIZE	VOLUME + WEIGHT
L22 x W14.5 x H5 cm L8.7 x W5.7 x H2 in	900 ml   30 fl oz 390 g   13.7 oz





900ml  
30oz



1.25L  
42oz





# THERMO POT

Vacuum insulated and 100% leak proof, the Thermo Pot makes it easy to bring hot (or cold) meals with you on your commute, to the park or on the trail. The natural cork lid is water-repellent, and has thumb grooves to give you extra grip when opening on-the-go.

WATCH VIDEO 



## SEALED + SECURE

The screw top silicone seal + natural cork lid is 100% leak proof and airtight



## STAYS HOT

Soups, stews or just a really big coffee, the Thermo Pot keeps them hot for up to 6 hours



## STAYS COLD

Smoothies, salads or even ice for your drinks, it'll keep them cold for 8 hours



## RECYCLABLE MATERIALS

BPA-free, 304/18-8 stainless steel, polypropylene, silicone, natural cork, nylon

**NEW**



Stainless steel spoon secured with nylon strap

Double-walled vacuum insulation

Full stainless steel food contact

Naturally insulative cork lid with thumb grooves for extra grip

BAM-TPB015

SIZE	VOLUME + WEIGHT
D10.5 x H16cm L6.3 x D4.15 in	550 ml   18.5 fl oz 515 g   18.1 oz





black+blum



# FOOD FLASK

A slightly smaller version of our Thermo Pot but just as mighty with a steel lid, the Food Flask is also double-walled and vacuum insulated to keep contents hot or cold for hours. The wood fibre/PP spoon neatly hugs the body for compact carrying and makes it easy to eat lunch on-the-go.

WATCH VIDEO 



## SEALED + SECURE

The screw top silicone seal + stainless steel lid is 100% leak proof and airtight



## STAYS HOT

Soups, stews or just a really big coffee, the Food Flask keeps things hot for up to 6 hours



## STAYS COLD

Smoothies, salads or even ice for your drinks, it'll keep it cold for 8 hours



## RECYCLABLE MATERIALS

BPA-free, 304/18-8 stainless steel, silicone, nylon



Olive  
BAM-FFB-S010



Ocean  
BAM-FFB-S005



Orange  
BAM-FFB-S003



SIZE	VOLUME + WEIGHT
D8.7 x H15.5 cm D3.1 x H6.1 in	400 ml   13.5 fl oz 412 g   14.5 oz







# LUNCH BOX ORIGINAL

Made from high-quality BPA/BPS-free durable plastic, the Lunch Box Original includes a stainless steel fork and two removable compartments for extra snacks and dressings. 100% leak proof and incredibly versatile, this is our best-selling lunch box.

WATCH VIDEO 



## SEALED + SECURE

Silicone seals plus sturdy clips lock the lid into place - it's 100% leak proof and airtight



## REMOVABLE COMPARTMENTS

Take the lot or none at all, this lunch box is fully customisable for what you need



## VERSATILE

Microwave, dishwasher and freezer-safe, the Lunch Box Original can be used however you like



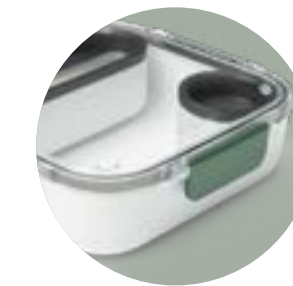
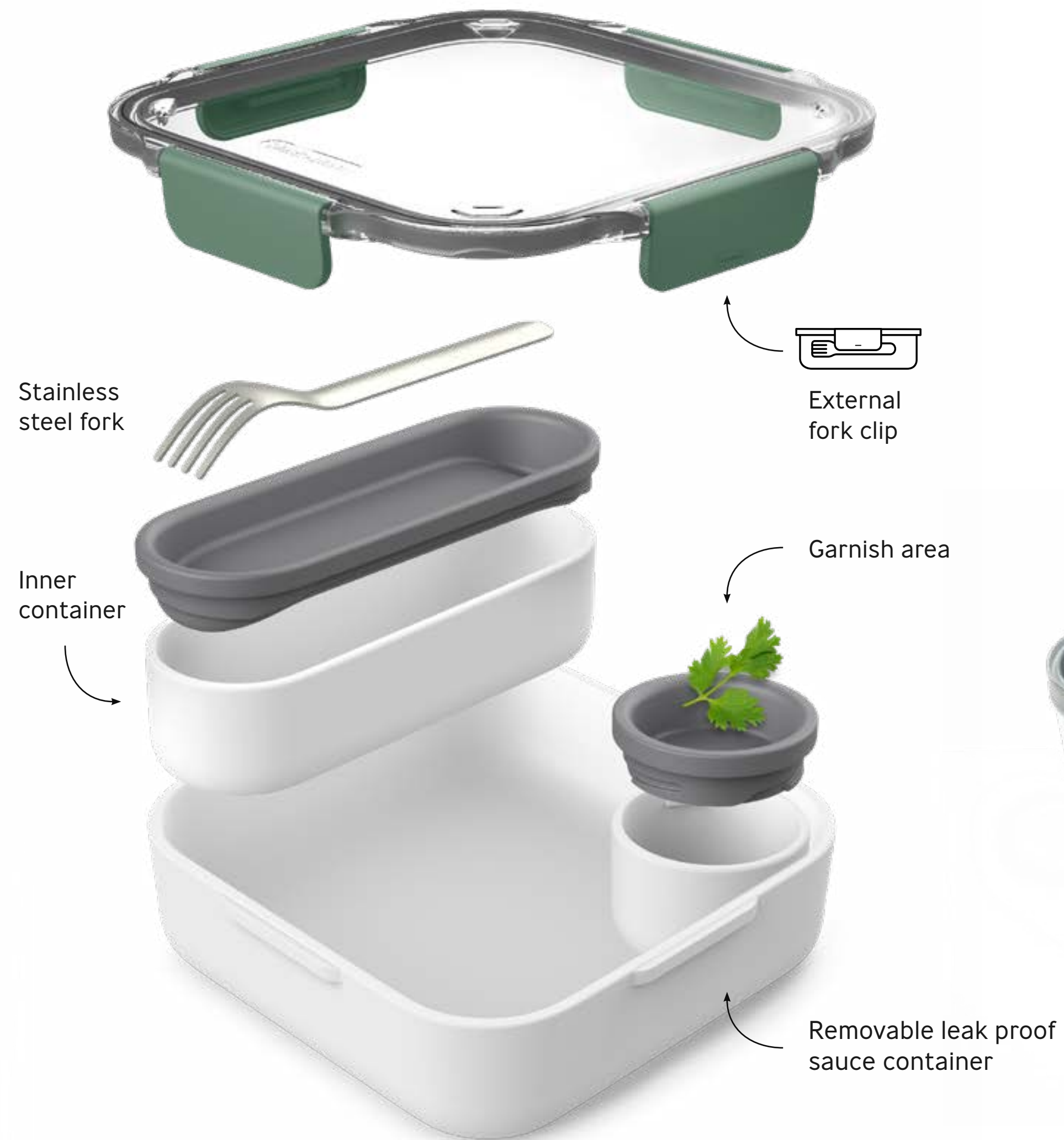
## FORK INCLUDED

Stored either under the lid or clipped to the side of the box, the stainless steel fork means stopping for lunch is quick and easy

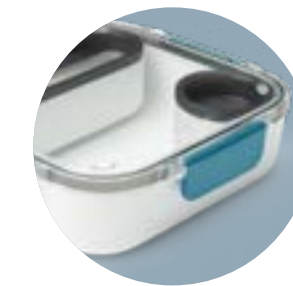


## RECYCLABLE MATERIALS

BPA-free, Polypropylene, Tritan™, 304/18-8 stainless steel, silicone



Olive  
BAO-BA010



Ocean  
BAO-BA005



SIZE	VOLUME + WEIGHT
L20 x W20 x H5.5 cm L7.9 x W7.9 x H2.2 in	1 L   34 fl oz 510 g   18 oz







# LUNCH POT ORIGINAL

The Lunch Pot Original includes two leak proof containers that can be locked together for easy carrying. This taller lunch box design works especially well in backpacks and tote bags, and the silicone strap holds the fully integrated stainless steel “spork” (spoon and fork) so you can easily find it at lunchtime.

WATCH VIDEO 

## SEALED + SECURE



The screw top lid with silicone seals locks the lid into place - it's 100% leak proof and airtight

## COMPACT STORAGE



Once finished, the smaller pot fits inside the larger, saving on space in your bag

## CUTLERY INCLUDED



Held securely in place by the silicone strap, the stainless steel spork (spoon and fork) works for both salads and stews

## SEPARATE COMPARTMENTS



Makes it easy to bring breakfast and lunch, or lunch and snacks

## RECYCLABLE MATERIALS



Polypropylene, Tritan™, 304/18-8 stainless steel, silicone

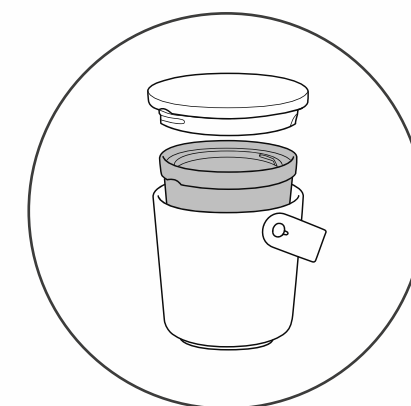


Handle makes it easy to retrieve from your bag

Microwave, dishwasher and freezer-safe



Two leak proof pots twist 'lock' together



Nests for compact storage after use



Olive  
BAO-BP010



Ocean  
BAO-BP005

SIZE	VOLUME + WEIGHT
D12 x H19.5 cm D4.7 x H7.7 in	300 + 600 ml   10 + 20 fl oz 370 g   13 oz





300ml  
10oz

600ml  
20oz



# GLASS LUNCH COLLECTION

This 100% leak proof and lightweight range is available in three sizes and two colours. It is thoughtfully designed; appealing to glass lunch box lovers without the weight and bulkiness usually associated, and with added protection. Ideal for hot and cold food, the collection is great for both the midweek lunch and Saturday picnic.

WATCH VIDEO 



## SAFE + SECURE

The innovative combination of all four components create a completely leak proof seal



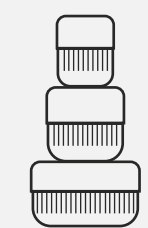
## HEAT PROOF + PROTECTED

The wood fibre base both protects the glass when you're out and about, and your hands when removing from the hot microwave



## NO MORE SINGLE-USE PLASTIC

The silicone top removes the need for plastic cling-film when microwaving to prevent splatter



## VERSATILE

This range is ideal for both hot and cold foods, and the three sizes make it easy to bring breakfast, lunch and everything in between



## RECYCLABLE MATERIALS

BPA-free, Borosilicate glass, silicone, polypropylene 304/18-8 stainless steel, with sustainable wood fibre

# GLASS LUNCH BOWL



Almond  
GR-LB-L014



Slate  
GR-LB-L015



750ml  
25oz

SIZE	VOLUME + WEIGHT
D14.5 x H8 cm D5.7 x H3.2 in	750 ml   25 fl oz 440 g   15.5 oz

Stainless steel  
screw tight lid

BPA-free silicone  
leak proof seal

Microwave-safe  
+ heatproof base  
with wood fibre

Lightweight  
glass which is  
microwave +  
oven-safe

Non-slip  
silicone foot







## GLASS LUNCH POT - LARGE



Almond  
GR-LB-M014



Slate  
GR-LB-M015



600ml  
20oz

SIZE	VOLUME + WEIGHT
D12 x H9.5 cm D4.7 x H3.7 in	600 ml   20 fl oz 380 g   13.5 oz

## GLASS LUNCH POT



Almond  
GR-LB-S014



Slate  
GR-LB-S015



450ml  
15oz

SIZE	VOLUME + WEIGHT
D9.5 x H11 cm D3.7 x H4.3 in	450 ml   15 fl oz 320 g   11 oz





450ml  
15oz



600ml  
20oz



750ml  
25oz



# MULTI-FUNCTION

Made from innovative microwave-safe steel, the Multi-Function boxes and bowls are our newest and most versatile range. Also dishwasher, oven (base only) and freezer-safe, they're perfect for the growing trend of meal prepping, zero-waste refill food storage, and eating on-the-go.

Available in two shapes and five sizes, you can choose how you want to use the Multi-Function range. Different meal types, portion sizes, or simply for the whole family, this range was designed with multi-purchase in mind, increasing average order value and re-purchase opportunities.

[READ MORE ABOUT MICROWAVE-SAFE STEEL](#)





# MULTI-FUNCTION BOXES

Available in three sizes, the Multi-Function boxes are tough but lightweight, making it easy to carry all you need for the day. They're 100% leak proof and airtight, keeping food fresher for longer and have a semi-transparent lid, so you don't forget what's in there and can reduce food waste.



## MICROWAVE-SAFE STEEL

We've worked closely with manufacturers to develop this innovative and versatile range. It's also dishwasher, oven (base only), freezer-safe.



## SEALED + SECURE

The vacuum sealed lid lock valve keeps it securely closed, 100% leak proof and airtight



## LIGHTWEIGHT + DURABLE

The single-walled stainless steel is thin but tough, which means it's lighter and easy to transport, but also won't buckle under pressure



## COMPACT STORAGE

Both the boxes and their lids have been designed with neat storage in mind. Different sizes will nest, same sizes will stack



## HYGIENIC + EASY CLEAN

It's super easy to keep this range clean, the lid seals are fully removable and have been designed with no hidden nooks



## RECYCLABLE MATERIALS

BPA-free, 304/18-8 stainless steel, polypropylene, silicone

**NEW**



Made from innovative microwave-safe steel

FBSS-BX-S017-EN

600 ml - 20 oz SIZE	WEIGHT
L17.5 x W12.6 x H6.5 cm L6.8 x W4.9 x H2.5 in	240 g   8.4 oz

FBSS-BX-M017-EN

900 ml - 32 oz SIZE	WEIGHT
L19 x W14.6 x H7.3 cm L7.5 x W5.7 x H2.9 in	270 g   9.5 oz

FBSS-BX-L017-EN

1.2 L - 42 oz SIZE	WEIGHT
L20 x W16.2 x H7.9 cm L7.9 x W6.4 x H3.1 in	320 g   11.3 oz





600ml  
20oz

900ml  
32oz

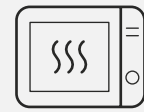
1.2L  
42oz



# MULTI-FUNCTION BOWLS

Exactly the same features as our Multi-Function boxes, the range also comes in bowls to suit those who prefer it. Just as tough, just as durable and just as lightweight.

## MICROWAVE-SAFE STEEL



We've worked closely with manufacturers to develop this innovative and versatile range. It's also dishwasher, oven (base only), freezer-safe.

## SEALED + SECURE



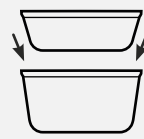
The vacuum sealed lid lock valve keeps it securely closed, 100% leak proof and airtight

## LIGHTWEIGHT + DURABLE



The single-walled stainless steel is thin but tough, which means it's lighter and easy to transport, but also won't buckle under pressure

## COMPACT STORAGE



Both the bowls and their lids have been designed with neat storage in mind. Different sizes will nest, same sizes will stack

## HYGIENIC + EASY CLEAN



It's super easy to keep this range clean, the lid seals are fully removable and have been designed with no hidden nooks

## RECYCLABLE MATERIALS



BPA-free, 304/18-8 stainless steel, polypropylene, silicone

**NEW**



Stacks + Nests



950ml  
33oz

Vacuum seal lid lock



close

open



650ml  
23oz

Made from innovative microwave-safe steel



FBSS-BL-S017-EN

650 ml - 23 oz SIZE	WEIGHT
L17 x W17 x H6 cm L6.7 x W6.7 x H2.3 in	245 g   8.6 oz

FBSS-BL-L017-EN

950 ml - 33 oz SIZE	WEIGHT
L17 x W17 x H8.2 cm L6.7 x W6.7 x H3.2 in	270 g   9.5 oz





950ml  
33oz

650ml  
23oz



# DRINKWARE

---

Our water bottles and travel tumblers are at home with you in the wild, whether it's the morning commute or the mountain trail. Made from steel, glass or high-quality plastic they come in a range of sizes and weights to suit whatever you need them for. Reliable, leak proof and built to last, they're ready to go when you are.





# EXPLORER BOTTLES

It's all in the name, these bottles were made for adventures. We wanted to create the ultimate design, built to cope with the toughest environments.

WATCH VIDEO 



## SAFE + SECURE

100% leak proof and will never spill a drop



## REINFORCED STRUCTURE

Vertical ribs on body wall make it stronger and easier to grip



## STAYS COLD

Vacuum insulated to keep drinks ice cold for 24hrs



## STAYS HOT

Ideal to bring coffee and tea to keep the team fueled for the whole day, it stays hot for 12hrs



## RECYCLABLE MATERIALS

BPA-free, 304/18-8 stainless steel, silicone, nylon

**NEW**

# EXPLORER BOTTLE LARGE



Olive  
BAM-EIWB-L010



Ocean  
BAM-EIWB-L005



Orange  
BAM-EIWB-L003

SIZE	VOLUME + WEIGHT
D8.6 x H23.5 cm D3.4 x H9.2 in	850 ml   29 fl oz 390 g   13.7 oz

# EXPLORER BOTTLE



Olive  
BAM-EIWB-S010



Ocean  
BAM-EIWB-S005



Orange  
BAM-EIWB-S003


SIZE	VOLUME + WEIGHT
D8.6 x H19 cm D3.4 x H7.5 in	650 ml   22 fl oz 330 g   11.6 oz





650ml  
22oz

black + blum



800ml  
29oz

black + blum



# INSULATED WATER BOTTLES

Minimalist design and no-fuss functionality, our Insulated Water Bottles do exactly what you need them to. Keeps drinks cold for up to 24hrs or hot for up to 12hrs, and the vegan leather strap means no missing lids on the road.

WATCH VIDEO



## SAFE + SECURE

100% leak proof and will never spill a drop



## NO MISSING LID

Held securely in place by a steel ring and vegan leather strap, the lid is going nowhere without you



## STAYS COLD

Vacuum insulated to keep drinks ice cold for 24hrs



## STAYS HOT

Ideal to bring coffee and tea to keep the team fueled for the whole day, it stays hot for 12hrs



## RECYCLABLE MATERIALS

BPA-free, 304/18-8 stainless steel, polypropylene, vegan leather, silicone

**NEW**

# INSULATED BOTTLE LARGE



Olive  
BAM-IWBB-L010



Ocean  
BAM-IWBB-L005



Orange  
BAM-IWBB-L003



SIZE	VOLUME + WEIGHT
D7.7 x H28.5 cm D3 x H11 in	750 ml   25 fl oz 384 g   13.5 oz

# INSULATED BOTTLE

Vegan leather strap keeps lid secure



Olive  
BAM-IWBB-S010



Ocean  
BAM-IWBB-S005



Orange  
BAM-IWBB-S003

Narrow body fits easily into backpacks and cup holders



SIZE	VOLUME + WEIGHT
D7.3 x H23 cm D2.8 x H9 in	500 ml   17 fl oz 280 g   9.8 lbs





500ml  
17oz

750ml  
25oz



# STEEL BOTTLE

We've gone back to basics with our single-walled Steel Bottle. It's simple yet effective design, includes a wood fibre/PP leak proof lid with a strong steel carry-loop. Reliable and compact, it's ideal for when you want to keep things ultra lightweight.

WATCH VIDEO 



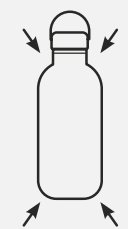
## SAFE + SECURE

100% leak proof and will never spill a drop



## LIGHTWEIGHT + DURABLE

The single-walled stainless steel is thin but tough, which means it's lighter and easy to transport



## COMPACT

The single wall structure makes it extremely compact when compared to double wall alternatives



## RECYCLABLE MATERIALS

BPA-free, 304/18-8 stainless steel, polypropylene with wood fibre, silicone



Olive  
BAM-WBB-S010



Ocean  
BAM-WBB-S005



SIZE	VOLUME + WEIGHT
D7.5 x H20 cm D2.95 x H7.9 in	600 ml   20 fl oz 165 g   5.8 oz



600ml

165g

20cm x 7.5cm

500ml

380g

26cm x 7cm

← Compact size/weight when compared with standard double-walled vacuum bottle

Steel capped lid ensures plastic-free liquid contact





black+blum



# GLASS WATER BOTTLE

We wanted to create a minimal design that felt sturdy and authentic, allowing you to enjoy the simplicity that comes with drinking from glass. The thread on the inside of the neck means it has a smooth edge surface, making it easier, and more enjoyable to drink from. The 100% leak proof lid features high-quality stainless steel inside, ensuring no plastic contact with water.

WATCH VIDEO 



## SAFE + SECURE

100% leak proof and will never spill a drop



## BRIGHT + PROTECTED

The silicone sleeve is available in 7 colours and protects the glass, and also gives your hand extra grip



## TASTE-NEUTRAL

The durable borosilicate bottle is tougher than normal glass and completely flavour-neutral, leaving your drink tasting as it should



## RECYCLABLE MATERIALS

BPA-free, Hand-blown borosilicate glass, 304/18-8 stainless steel, nylon, polypropylene, silicone (Almond sleeve is TPE with sustainable wood fibre)



Olive  
GR-WB-M010



Ocean  
GR-WB-M005



Slate  
GR-WB-M015



Orange  
GR-WB-M003



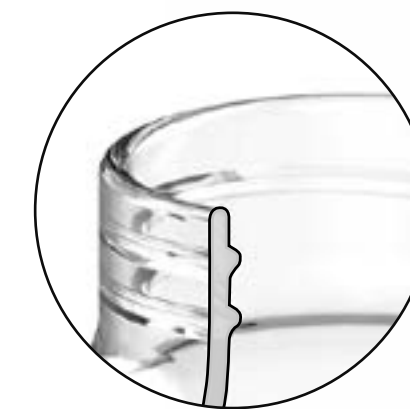
Coral  
GR-WB-M011



Burgundy  
GR-WB-M004



Almond  
GR-WB-M014



Inside thread gives a better drinking experience

Steel lid is strong, leak proof, and taste-neutral



Nylon paracord carry loop

SIZE	VOLUME + WEIGHT
D6.5 x H23.5 cm D2.6 x H9.3 in	600 ml   20 fl oz 340 g   12 oz







# INSULATED TRAVEL TUMBLER

Made from high-quality stainless steel, it works for whatever you're brewing. Coffee, beer, cocktails or tea, it will keep drinks hot for up to 5 hours, or cold for 8. The lid is 100% leak proof and opens with one hand - ideal for multi-tasking on the move.

## INNOVATIVE LID LOCK



The first of its kind, our 100% leak proof lid lock creates a vacuum seal and won't spill a drop

## LIKE DRINKING FROM A MUG



Unlike other steel tumblers, it doesn't come with a complicated pour system, helping you not to burn yourself when drinking

## STAYS COLD



Smoothies, juice, beers and cocktails - they'll stay icy cold for 8 hours

## STAYS HOT



Coffee, tea, mulled wine and hot toddies - it keeps things steamy for up to 5 hours

## ONE HAND OPENING



Unlock in motion with our easy-open lid - there's no need to stop

## RECYCLABLE MATERIALS

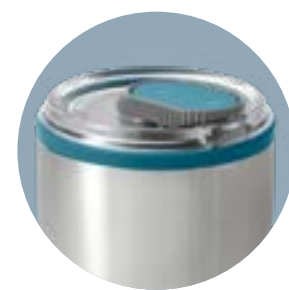


BPA-free, 304/18-8 stainless steel, Tritan™, silicone, nylon

**NEW**



Olive  
BAM-TT010



Ocean  
BAM-TT005



Orange  
BAM-TT003



100% leak proof lid lock design

Dishwasher-safe lid easily dismantles for thorough cleaning

Double-walled + vacuum insulated keeping drinks hot and cold

Narrow base easily fits into your hand and cup holders

SIZE	VOLUME + WEIGHT
H 20.7cm x D 9.4cm H 8.15 x D 3.7 in	600 ml   20 fl oz 435 g   15.3 oz







# INSULATED TRAVEL CUP

A slightly smaller version of our tumbler, but made with the same high-quality stainless steel, it will keep your drinks hot or cold. The lid is 100% leak proof, lockable and easy to disassemble for cleaning. It's ideal to take your brew with you, wherever you want to go.

WATCH VIDEO 



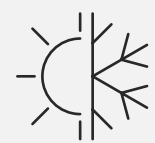
## INNOVATIVE LID LOCK

The unique design is 100% leak proof and lockable so you won't spill a drop



## LIKE DRINKING FROM A MUG

Unlike other travel cups, it doesn't come with a complicated pour system, helping you not to burn yourself when drinking



## TEMPERATURE STEADY

Double-walled insulation means your drinks will stay hot or cold for hours



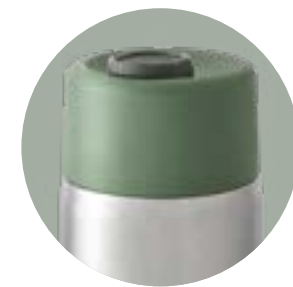
## ONE HAND OPENING

Unlock in motion with our easy-open lid - there's no need to stop

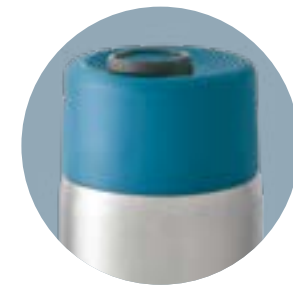


## RECYCLABLE MATERIALS

BPA-free, 304/18-8 stainless steel, silicone, polypropylene, nylon, POK, POM



Olive  
TC-SS010




Ocean  
TC-SS005



Orange  
TC-SS003



Slate  
TC-SS015

 100% leak proof lid lock design



Dishwasher-safe lid easily dismantles for thorough cleaning



Stainless steel insulated cup keeps drinks hot or cold

SIZE	VOLUME + WEIGHT
D8.6 x H23.5 cm D3.4 x H9.2 in	340 ml   12 fl oz 280 g   9.9 oz





340ml  
12oz



# GLASS TRAVEL CUP

Crafted from lightweight borosilicate glass, this design will give you a completely taste-neutral experience for either your favourite home brew or coffee shop roast. The non-slip silicone sleeve gives protection to the surprisingly tough glass inner, and ensures you don't burn your hands. The lid is 100% leak proof, lockable and easy to dismantle for thorough cleaning.

WATCH VIDEO 



## INNOVATIVE LID LOCK

The unique design is 100% leak proof and lockable so you won't spill a drop



## LIKE DRINKING FROM A MUG

Unlike other travel cups, it doesn't come with a complicated pour system, helping you not to burn yourself when drinking



## ONE HAND OPENING

Unlock in motion with our easy-open lid - there's no need to stop



## TASTE-NEUTRAL

The durable borosilicate bottle is tougher than normal glass and completely flavour-neutral, leaving your drink tasting as it should



## RECYCLABLE MATERIALS

BPA-free, Hand-blown borosilicate glass, silicone, polypropylene, nylon, POK, POM



Olive  
TC-GR010




Ocean  
TC-GR005



Orange  
TC-GR003



Slate  
TC-GR015

 100% leak proof lid lock design



Protective + non-slip sleeve



Dishwasher-safe lid easily dismantles for thorough cleaning

Borosilicate glass cup is completely taste-neutral

SIZE	VOLUME + WEIGHT
D7.2 x H16.5 cm D2.8 x H6.5 in	340 ml   12 fl oz 355 g   12.5 oz







# CHARCOAL FILTRATION

Activated charcoal has been used for centuries to remove toxins, treat digestive ailments, and filter drinking water. It not only makes tap water taste delicious, but it completely eliminates the need for bottled water, and the single-use plastic that comes with it. What began with one bottle has quickly expanded to an entire range, with charcoal filtration being one of our best-selling collections.

We source our charcoal from the skilled artisan makers of Laos. They follow strict conservation rules to protect the surrounding forests and minimise the farming effect on the local environment.





## BINCHOTAN CHARCOAL HISTORY

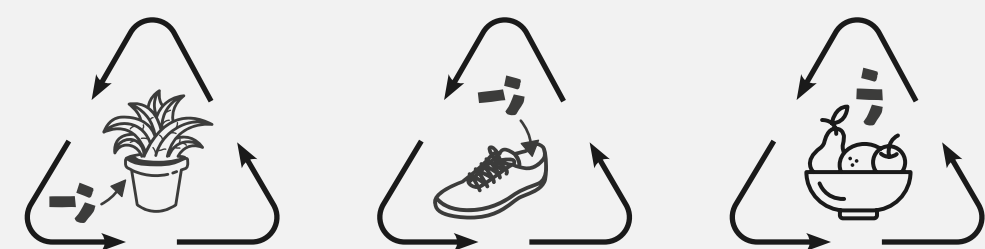
It is believed that a form of Binchotan charcoal (sometimes referred to as 'white charcoal') was introduced to Japan by a monk and scholar called Kukai 1,200 years ago. However, it wasn't until the Edo Period (17th century) that a man called Binchuya Chozaemon made it popular.

## HOW IT WORKS?

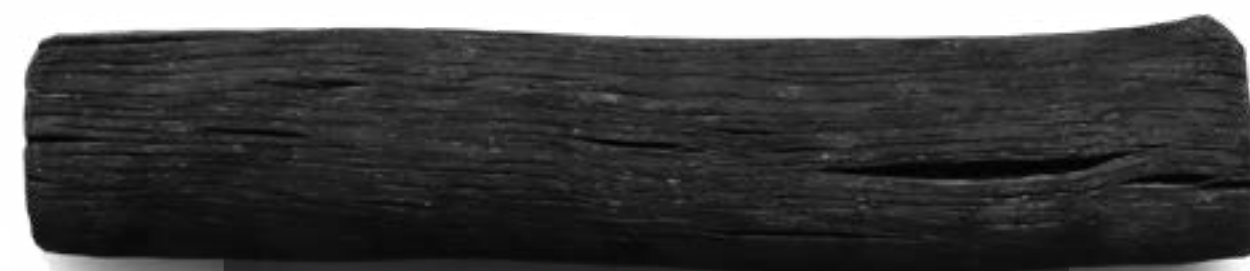
This type of filtering works using a process similar to reverse osmosis. Binchotan charcoal has an incredibly porous surface with tiny cavities orientated in many directions - just 1 gram has a surface area of 500m<sup>2</sup> (the size two tennis courts). The positive ions of contaminants in the water (like chlorine) are attracted to the negative surface of the carbon where they are held. In reverse, the charcoal releases its natural minerals such as calcium, potassium and magnesium back into the water, which softens it and enhances the taste.

## CIRCULAR ECONOMY

One of the reasons we love working with Binchotan charcoal is because it can be reused all around the house and garden once it's finished as a water filter.



[Read](#) the blog to find out more about this amazing material.

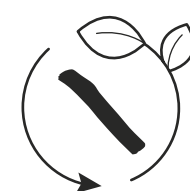


### + ADDS MINERALS

Like potassium, iron + magnesium

### - REMOVES CONTAMINANTS

Like chlorine



### ZERO-WASTE

Can be reused all around the house + garden



### VERSATILE

Can be used in any bottle or jug



### PLASTIC-FREE

No hard plastic casing like other water filters

1 stick lasts

6  
months

Makes tap water  
taste great

Filters water  
in 1-8 hours

\* Recharge your charcoal after 3 months of use by boiling it for 10 minutes.  
After 6 months recycle as fertiliser, deodoriser or dehumidifier



# CHARCOAL WATER FILTER

Our charcoal sticks are available in either single or a 4-pack. Each stick lasts 6 months and comes pressure washed and preserved in a vacuum-sealed recyclable plastic sleeve for immediate use.

Counter POS available (see p63).

WATCH VIDEO 

## SUSTAINABLY SOURCED



Our producers only farm from local renewable forests, without removing the roots to promote re-growth and protect soil biodiversity

## RECYCABLE



All packaging is 100% recyclable. The charcoal sticks can be reused all around the house + garden

## MATERIALS



100% natural wood

# ACTIVE CHARCOAL SINGLE FILTER



Fits in all our bottles

EGS001-1B

SIZE	FILTER LONGEVITY
D2.5 x L11.8 cm D1 x L5 in	Last 6 months, re-boil after 3 months

\*NB: as charcoal is natural wood, each stick may vary in size, max dimensions shown above.

# ACTIVE CHARCOAL 4-PACK FILTERS



EGS004

SIZE	FILTER LONGEVITY
W9.5 x L16.5 x H7 cm W3.8 x L6.5 x H2.8 in	Each filter 6 months, re-boil after 3 months







# BULK CHARCOAL PIECES

As more and more people are looking to live plastic-free and zero-waste, our 5kg bulk pack of charcoal allows consumers to buy by weight, and bring their own packaging. The shelf-ready box allows you to select the amount you need, and also illustrates the secondary uses of charcoal to extend its life, such as a deodoriser or dehumidifier.

This type of filtration works best in larger vessels, like water jugs and canisters. It also needs to be boiled for 10 minutes before first usage.



## SUSTAINABLY SOURCED

Our producers only farm from local renewable forests, without removing the roots to promote re-growth and protect soil biodiversity



## RECYCABLE

All packaging is 100% recyclable. The charcoal sticks can be reused all around the house + garden



## AVAILABLE TO BUY BY WEIGHT

Customers can choose how much they want, and bring their own packaging



## MATERIALS

100% natural wood



EGS5KG

SIZE	FILTER LONGEVITY
W29.5 x L29.5 x H20.5 cm W11.6 x L11.6 x H8 in	Each pieces 6 months, re-boil after 3 months



# CHARCOAL WATER FILTER & COIL

Turn any bottle into a filtered bottle with our universal charcoal coil. It comes with an active charcoal stick giving you 6 months of clean, clear and delicious water. No rattling and no scratches, it's locked into place with a spring coil. Completely taste-neutral and easy to use.

Counter POS available (see p63).

WATCH VIDEO 

## SUSTAINABLY SOURCED



Our producers only farm from local renewable forests, without removing the roots to promote re-growth and protect soil biodiversity

## RECYCABLE



All packaging is 100% recyclable. The charcoal sticks can be reused all around the house + garden

## FITS ANY BOTTLE

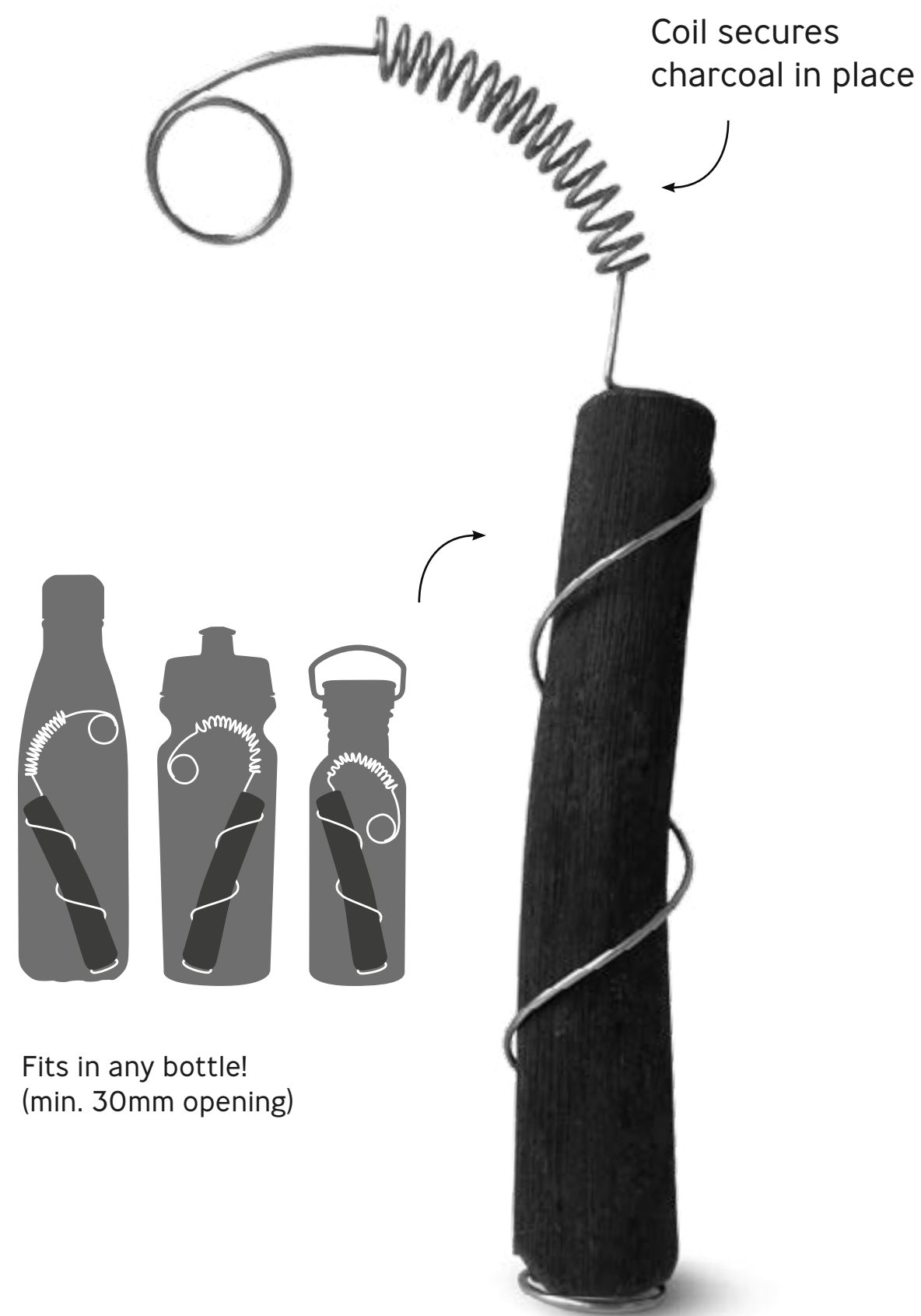


The high-quality steel spring coil locks the charcoal into place in any reusable bottle

## MATERIALS



304/18-8 stainless steel, 100% natural wood



EGS001-1C

SIZE	FILTER LONGEVITY
D2.8 x L11.8 cm* D1.1 x 4.6 in	Last 6 months, re-boil after 3 months

\*NB: as charcoal is natural wood, each stick may vary in size, max dimensions shown above.







# EAU GOOD GLASS

Made from hand-blown durable borosilicate glass, this bottle includes an active charcoal water filter and coil, and is protected by a recycled polyester insulating sleeve. The lid is made from a natural wood fibre polypropylene mix and is 100% leak proof. Never has water looked so clear or tasted so clean.



## STRONG LID + LOOP

100% leak proof with a convenient steel loop for easy carrying



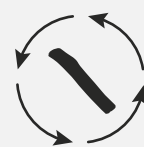
## SUSTAINABLY SOURCED

Our charcoal producers only farm from local renewable forests, without removing the roots to promote re-growth and protect soil biodiversity.



## TASTE-NEUTRAL

The durable borosilicate bottle is tougher than normal glass and completely flavour-neutral, leaving your water tasting clean and clear



## EASY TO REFILL

Paired perfectly with our Active Charcoal 4-pack, it's easy to replace the filter



## RECYCLABLE MATERIALS

Hand-blown borosilicate glass, polypropylene with wood fibre, recycled polyester, silicone, polypropylene, 304/18-8 stainless steel

**NEW**



Olive  
EGO-EGG010



Ocean  
EGO-EGG005



Removable stainless steel coil to secure your charcoal in place

Recycled polyester sleeve for extra protection

Steel capped lid ensures plastic-free water contact

SIZE	VOLUME + WEIGHT
D8.2 x H23.6 cm	650 ml   22 fl oz
D3.2 x H9.3 in	315 g   11 oz





## ZERO WASTE

### BASIC INGREDIENTS

The Zero Waste solution to basic ingredients is simple:

- **Non-perishables** (dry goods). Buy whole ingredients in bulk, as the packaging is mostly thick paper bags, which are composted. When milk and cream come directly from the dairy, there is an opportunity to specify the vendor with which they occur. Alternatively, choose brands without packaging. If you don't want to make your own butter, find vegetable shortening, coconut oil, and other ingredients that are packaged in glass jars or metal cans.
- **Perishable ingredients**. Buy whole ingredients directly from their origin, such as eggs, meat, and produce. Buy whole ingredients that are packaged in glass jars or metal cans.
- **Salt**. One of the exceptions to the rule is salt. It can be bought in large quantities in bulk, as the packaging is mostly thick paper bags, which are composted. Alternatively, choose brands without packaging. If you don't want to make your own butter, find vegetable shortening, coconut oil, and other ingredients that are packaged in glass jars or metal cans.
- **Sugar**. Can easily be bought in 10-20 lb bags. Buy whole ingredients that are packaged in glass jars or metal cans.
- **Milk, nuts and oils**. Buy whole ingredients that are packaged in glass jars or metal cans.
- **Flour**. Buy your own. Buy flour in bulk, as the packaging is mostly thick paper bags, which are composted. Alternatively, choose brands without packaging. If you don't want to make your own butter, find vegetable shortening, coconut oil, and other ingredients that are packaged in glass jars or metal cans.
- **Main acid sources**. Buy your own. Buy vinegar in bulk, as the packaging is mostly thick paper bags, which are composted. Alternatively, choose brands without packaging. If you don't want to make your own butter, find vegetable shortening, coconut oil, and other ingredients that are packaged in glass jars or metal cans.
- **Other ingredients**. Buy your own. Buy spices in bulk, as the packaging is mostly thick paper bags, which are composted. Alternatively, choose brands without packaging. If you don't want to make your own butter, find vegetable shortening, coconut oil, and other ingredients that are packaged in glass jars or metal cans.



# CARAFES

Both our carafes are a beautiful natural, organic shape which is a pleasure to hold and pour from. They are made from lightweight and durable hand-blown glass, and come with our famous active charcoal water filter, giving you 6 months of pure, clear and delicious water.

The larger of the two, the Eau Carafe, is perfect for entertaining and has a natural cork stopper with a removable silicone cap to prevent mould. The Personal Carafe is ideal on bedside and kitchen tables, or in the office to keep you hydrated throughout the day - it also comes with a small tumbler and sustainably-sourced cork coaster.

## SUSTAINABLY SOURCED



Our charcoal producers only farm from local renewable forests, without removing the roots to promote re-growth and protect soil biodiversity



## EASY TO REFILL

Pairing perfectly with our Active Charcoal 4-pack, it's easy to replace the filter



## SUPERIOR MATERIALS

The durable borosilicate bottle is more lightweight than normal glass and completely flavour-neutral, leaving your water tasting clean and clear



## RECYCLABLE MATERIALS

Hand-blown borosilicate glass, natural cork (silicone - Eau Carafe only)

# EAU CARAFE

WATCH VIDEO



Sustainably-sourced cork stopper

EC002

SIZE	VOLUME + WEIGHT
D9.5 x H28 cm D3.7 x H11 in	1.1 L   37 fl oz 380 g   13.5 oz

# PERSONAL CARAFE

WATCH VIDEO



Hand-blown drinking glass/stopper

Natural cork coaster

EC003

SIZE	VOLUME + WEIGHT
D10 x H25 cm D4 x H9.8 in	800 ml   27 fl oz 650 g   23 oz







# ACCESSORIES

---

Our accessories have been designed to complement our main product ranges and are simple to add to any purchase. They will heighten any adventure and make it easy to live zero-waste, leaving no trace on your travels.





# LUNCH BAG

With a generous capacity and made from recycled plastic bottles, this lunch bag is all you need to carry your breakfast, lunch and snacks for the day. The sealed insulated construction keeps the contents cool, it's also 100% leak proof, water-repellent and easy to wipe clean. The roll top and clip make it easy to carry, ideal to strap to your bike or backpack.

WATCH VIDEO 



## SEALED + SECURE

Inspired by dry-bags, the roll top and welded lining construction is 100% leak proof



## WATER-REPELLENT INNER

Easy to wipe clean and food-safe



## KEEPS CONTENTS COOL

The insulative lining will maintain internal temperature and keep things cool



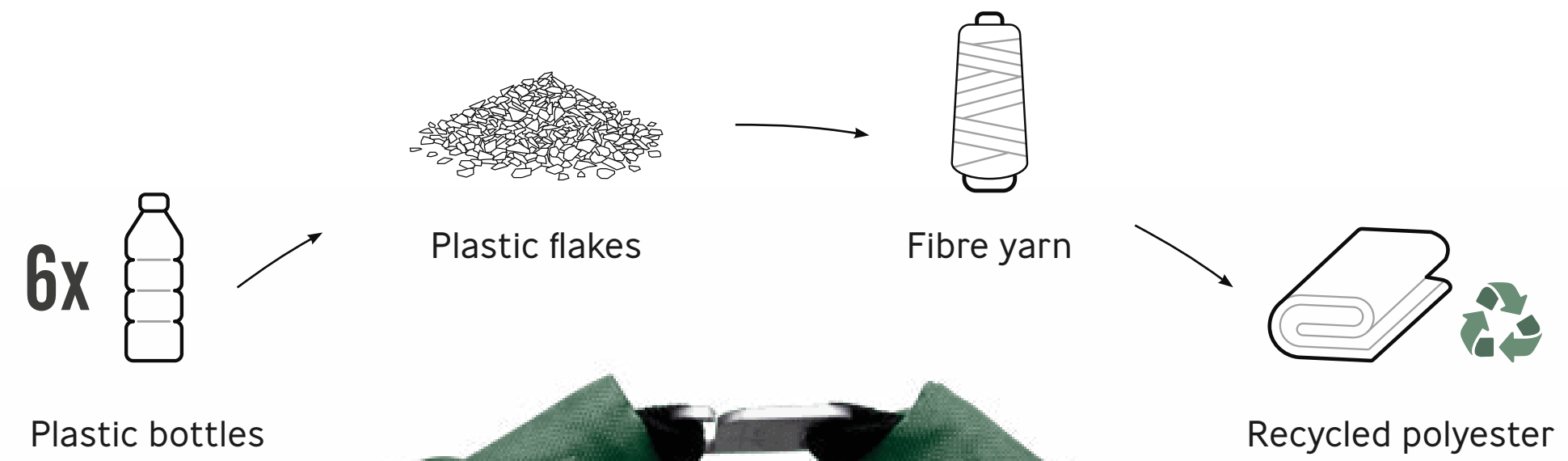
## COMPACT STORAGE

Folds down flat when empty to save on space



## SUSTAINABLE MATERIALS

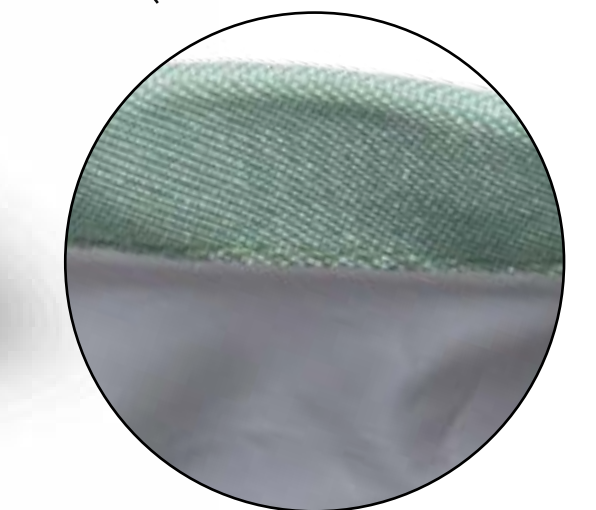
BPA-free, Iron (hook), polypropylene (strap), Recycled PET (outer fabric), PEVA (BPA and food-safe inner lining)



Olive  
LBB010



Slate  
LBB015



Water-repellent  
easy wipe lining

SIZE	VOLUME + WEIGHT
W20 x D15 x H31 cm W7.9 x D5.9 x H12.2 in	6.7 L   235 fl oz 141 g   5 oz





black+blum  
LONDON



## CUTLERY SET

This stacking knife, fork and spoon set feels at home in your hands, and nests into a hygienic, compact carry case. Made from 18/8 stainless steel, they're tough and are far more effective than plastic or bamboo sets.

We have developed a Counter Display Unit (CDU) as an alternative to the boxed packaging for merchandising in store. Ideal for counter tops near checkout for impulse or add-on purchase.

WATCH VIDEO 



### TOUGH + LIGHTWEIGHT

The high quality stainless steel is super strong but lightweight for easy carrying on-the-go



### HYGIENIC CARRY CASE

Snaps shut so there's no cross contamination



### DISHWASHER-SAFE

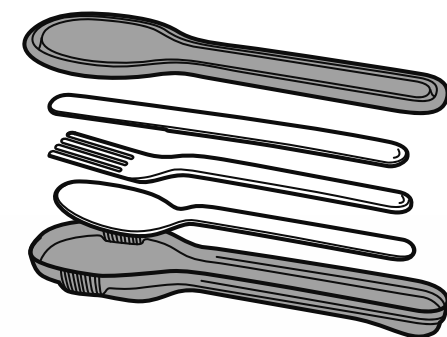
As easy to clean as home kitchen cutlery



### SUSTAINABLE MATERIALS

304/18-8 stainless steel, polypropylene

## CUTLERY SET + CASE



Spoon, fork and knife nest in the case



BAM-SSC001

SIZE	WEIGHT
L5 x W20 x H2 cm L2 x W7.8 x H0.8 in	127 g   4.5 oz

## CUTLERY SET + CASE CDU

Available in sets of 16, individually labeled



BAM-SSC002

SIZE	WEIGHT
L14.5 x W25 x H28 cm W5.7 x D9.8 x H11 in	127 g   4.5 oz







# RECIPE BOOK - LET'S DO LUNCH BOX

With over 80 recipes to make mornings and lunchtimes brighter, healthier and more sustainable, 'Let's Do Lunch Box' has been created specifically for our products. It is ideal to help boost average order value and merchandising within store. Including recipes from 4 well-known recipe developers, health, wellness and food influencers including Sara Kiyoko Popowa (@shisidelicious) and Ryan Carter (@livevitae), it's packed with nutritious and delicious meal ideas.



## 80+ RECIPES

Ideal for breakfast, lunch and everything in between

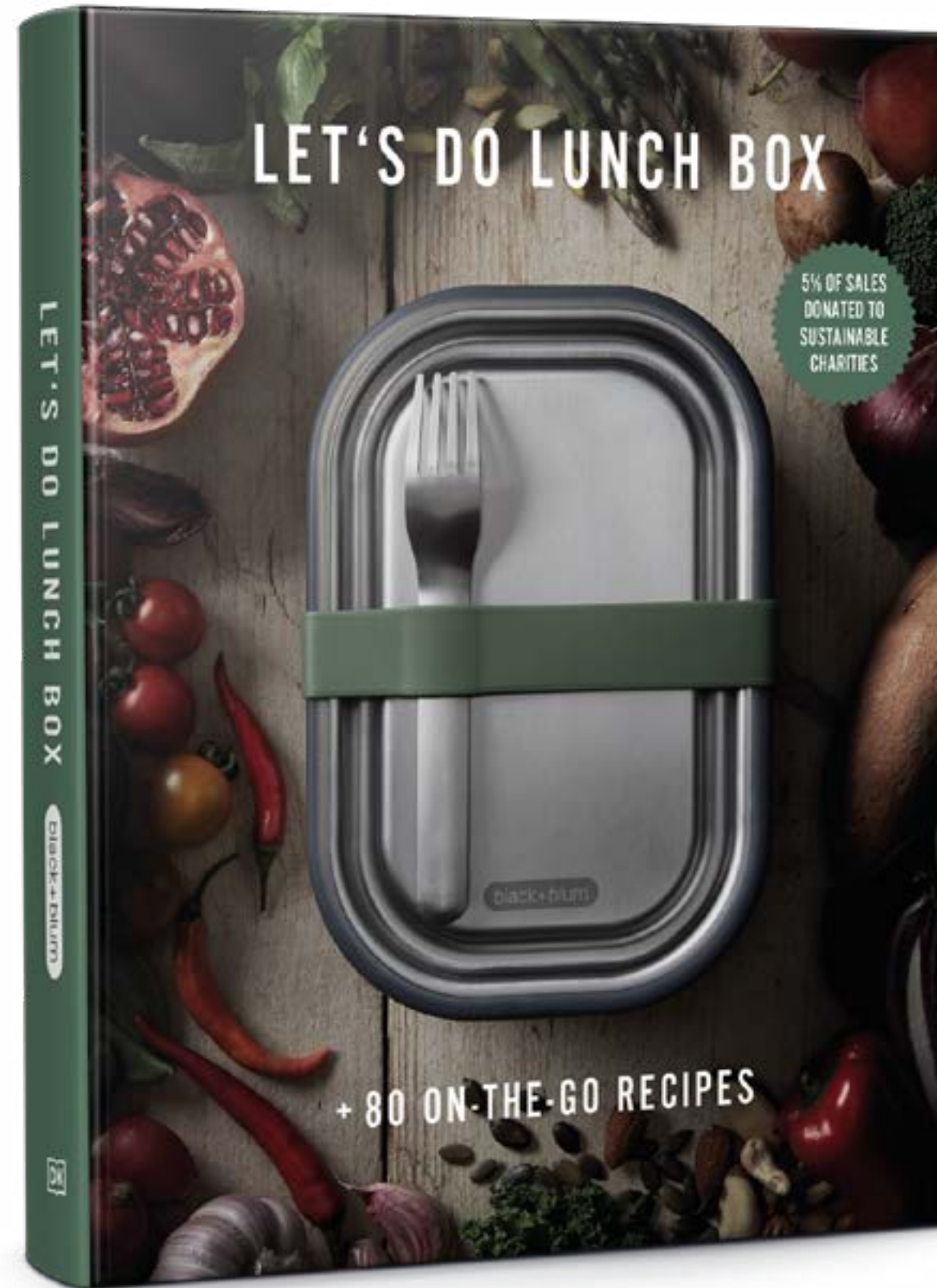


## IDEAL FOR UPSELLING

Each recipe recommends a product pairing, making this book the ideal add-on to boost your average-order-value



of sales go to our eco-charity partner, City Harvest



BAM-SSC001

SIZE	PAGES
W2 x L19.5 x H23.5 cm W0.8 x L7.7 x H9.2 in	191 pages



Delicious and nutritious recipes



Each recipe includes product recommendations

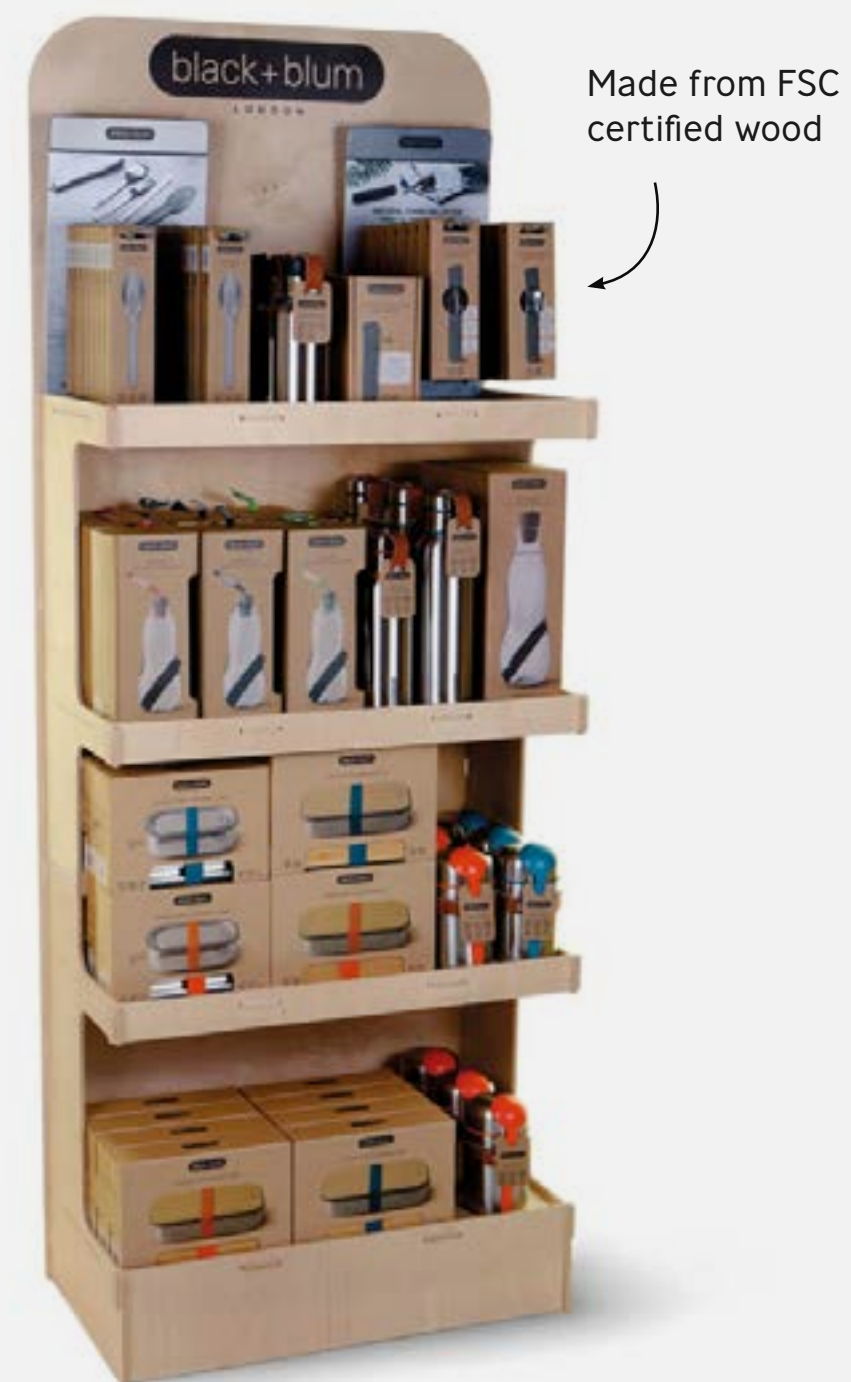


16 great recipes from food influencers



## WOODEN POS

This natural FSC Certified wooden floor-standing POS unit stands out instore, further highlighting the eco-credentials of the brand. The top two shelves are high enough to accommodate the metal POS unit (cutlery). It will arrive flat-packed and is easy to assemble with supplied instructions.



SIZE	PRODUCT CODE
W65 x D36 x H171 cm W25.5 x D14 x H67.3 in	POS-FSDU-S

## COUNTER POS STAND

Our simplest POS unit, the euro hook stand, is made of powder-coated steel and assembles with just two screws. It accommodates our individually boxed cutlery set & case, with interchangeable backing cards available in various languages as required. Arrives flat-packed.



SIZE	PRODUCT CODE
W21 x D27 x H36 cm W8.2 x D10.6 x H14.2 in	POS-COUNTERTOP

## COUNTER POS STAND

The set of 3 powder-coated steel risers will help elevate and complement any display, and neatly stack together for convenient storage.



SIZES	
POS-RISERS (largest)	POS-PLATE (name plate)
W15 x D15 x H10 cm W5.9 x D5.9 x H3.9 in	W12 x D4 x H4 cm W4.7 x D1.6 x H1.6 in

## COUNTER POS STAND

Include lifestyle imagery and informative product descriptions to your display and bring the range to life.



SIZES	
Landscape	Portrait
W21 x H14.8cm W8.26 x H5.8 in	W14.8 x H21cm W5.8 x H8.26 in



# CO-BRAND WITH US

Our range of unique and eco-friendly products are the perfect gift or promotional item for your employees and corporate events. From water bottles to lunch boxes, insulated thermoses or even a portable cutlery set - the possibilities are endless.

We have laser-etching and printing suppliers in the UK, Europe and US or, for larger volumes, at our factories. Made from high-quality materials, all our products are built to last and easy to customise. Enquire to create something special and sustainable with your logo.

## EXPLORE CO-BRAND OPTIONS

View our brochure below or email us at [co-brand@black-blum.com](mailto:co-brand@black-blum.com) to learn more.

CO-BRAND BROCHURE





## PHOTOGRAPHY + VIDEOS

Explore our wide range of videos, product and lifestyle imagery to help support and promote you both instore and online.

## ONLINE ASSETS

All images and videos can be found at

[www.black-blumassets.com](http://www.black-blumassets.com) ↓

## SOCIAL CHANNELS

Follow us for product launches, tips, recipes and more.



## CONTACT US

Email us at [sale@black-blum.com](mailto:sale@black-blum.com) or give us a call +44 (0) 20 7633 0022

[black-blum.com](http://black-blum.com)

## CUT OUT IMAGES

Clean and clear photography with exploded views and product details highlighted



## LIFESTYLE IMAGES

High-quality photography with a mix of people, food and different environments. Some high resolution available



## PRODUCT VIDEOS

Individually shot to further explain each product and show how it can be used

